

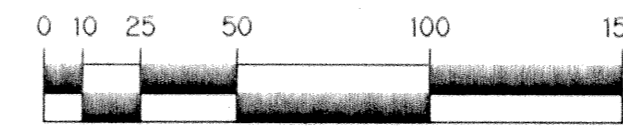
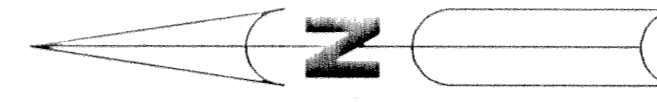
A PLANNED UNIT DEVELOPMENT

# BALLENISLES - PARCEL 6B

A PARCEL OF LAND LYING IN SECTIONS 11, 12, 13, AND 14, TOWNSHIP 42 SOUTH, RANGE 42 EAST, CITY OF PALM BEACH GARDENS, PALM BEACH COUNTY, FLORIDA

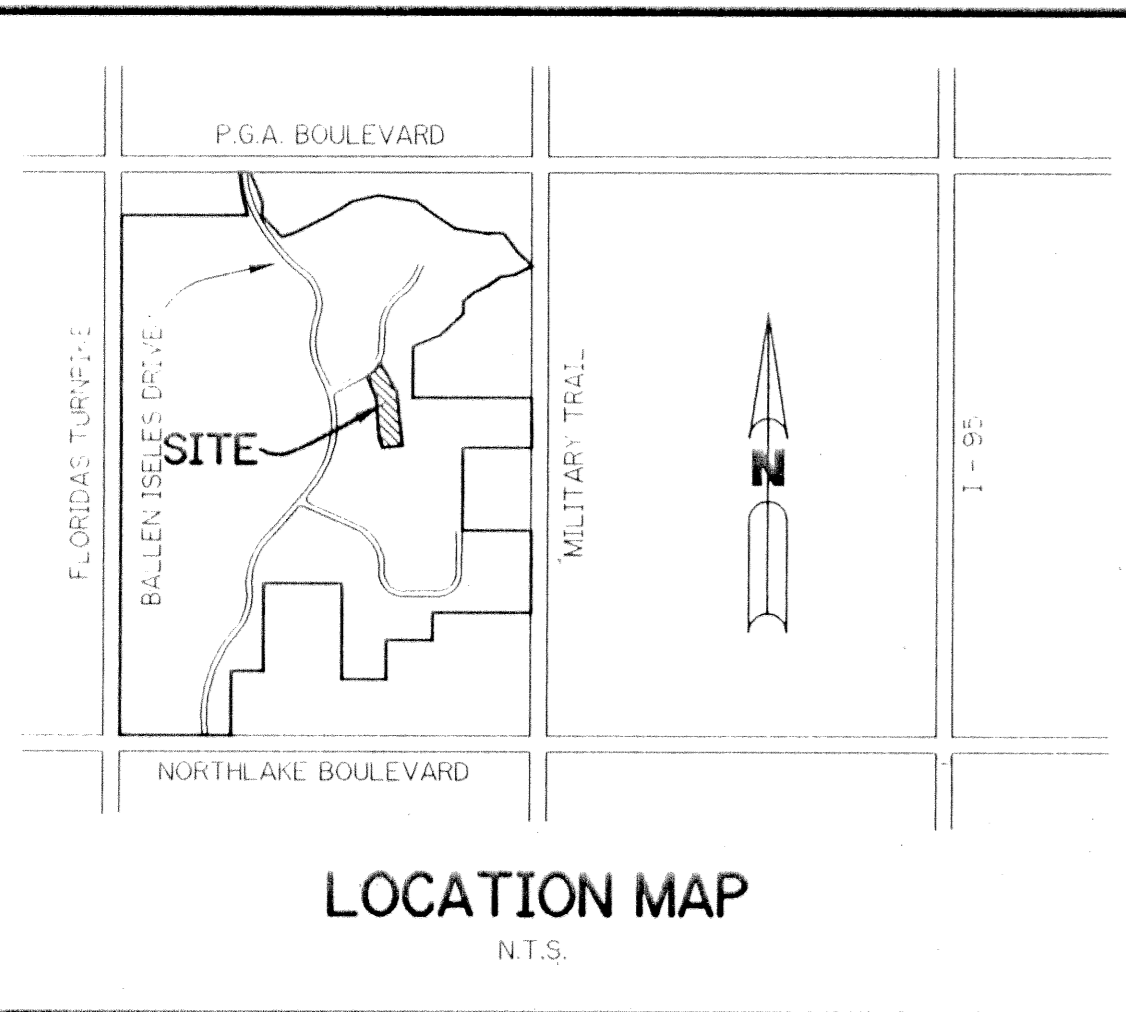
SHEET 2 OF 2

NOVEMBER, 1995

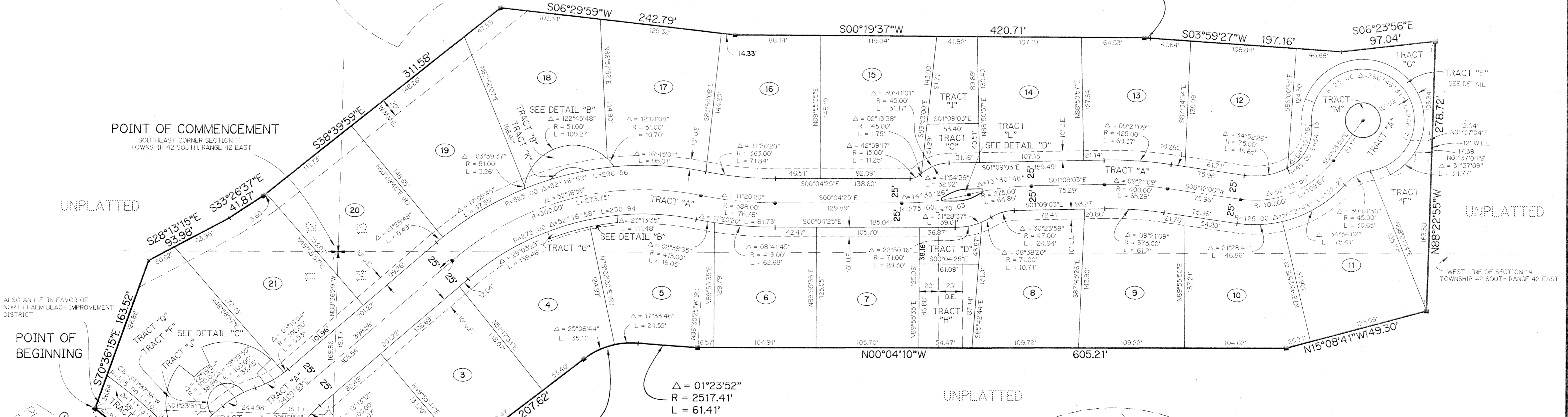
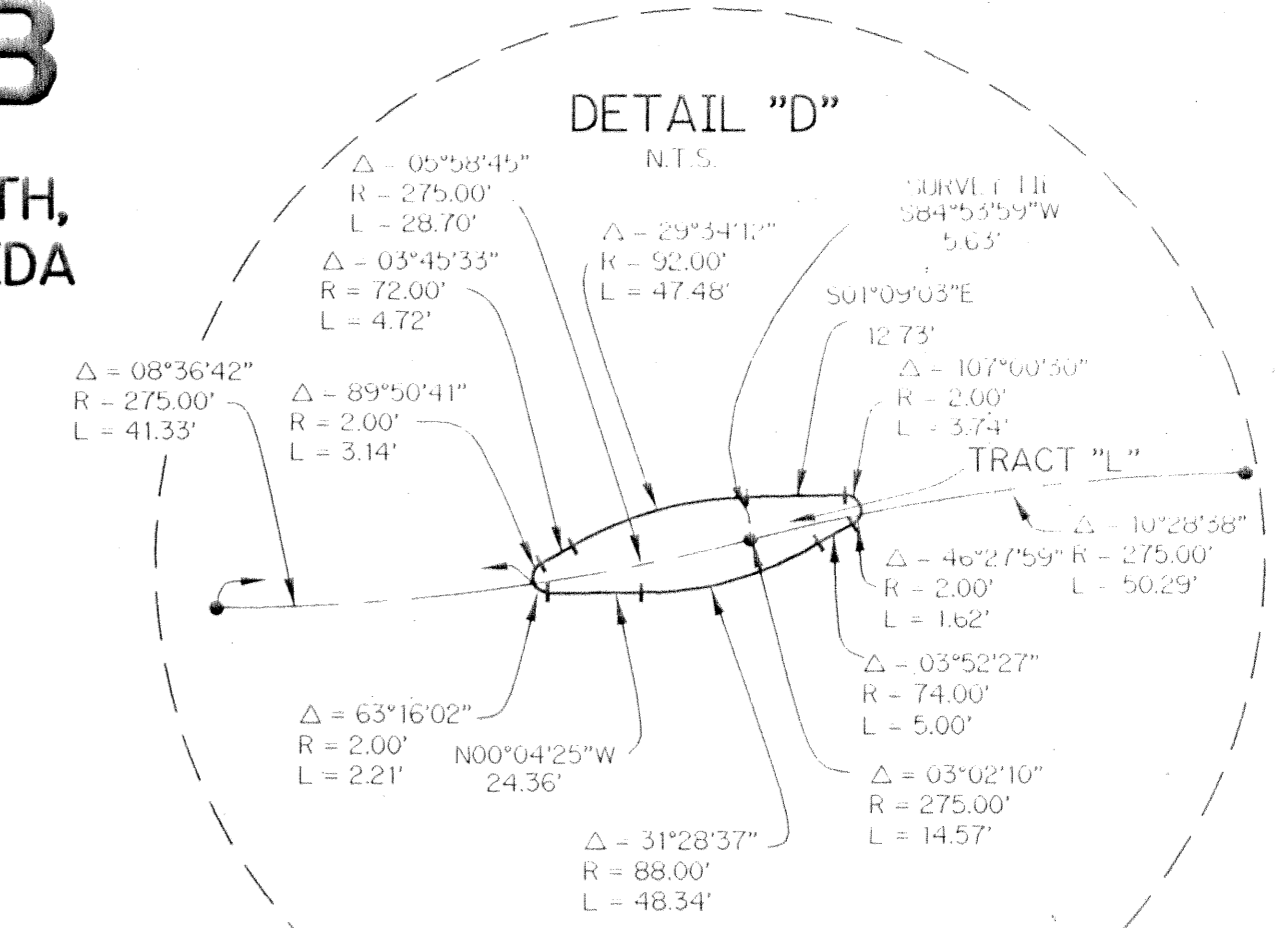
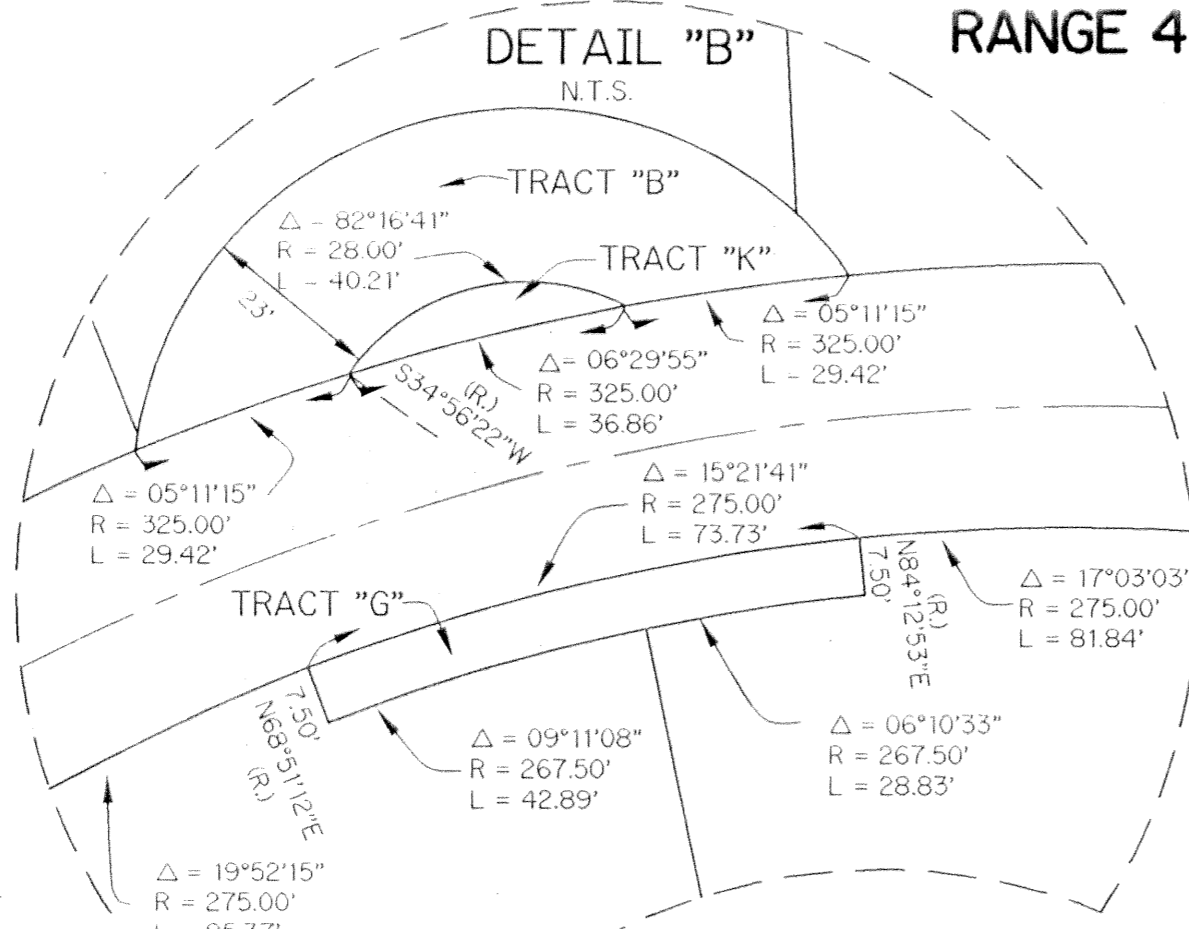


SCALE: 1" = 50'

UNPLATTED



LOCATION MAP  
N.T.S.



ALSO AN L.E. IN FAVOR OF NORTH PALM BEACH IMPROVEMENT DISTRICT

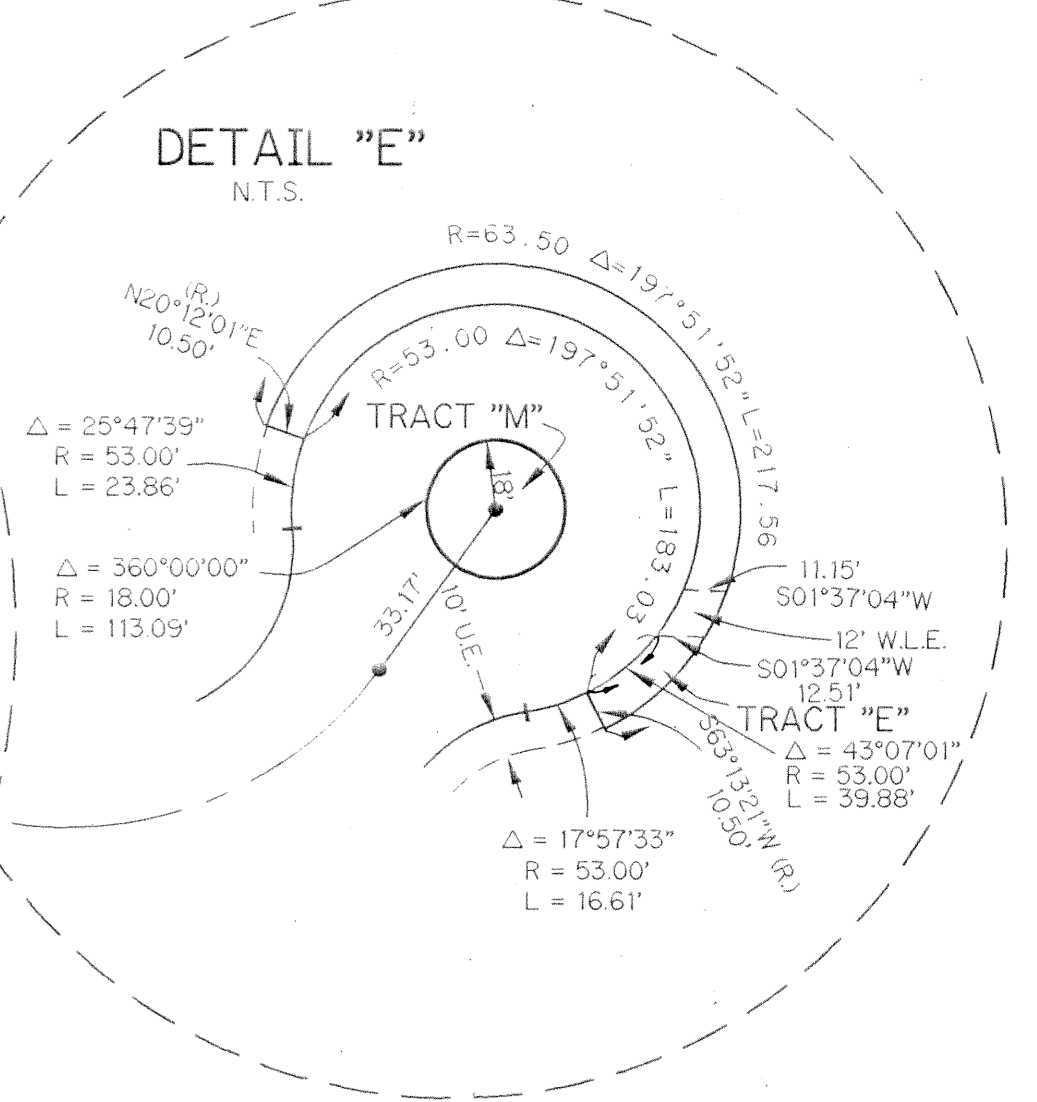
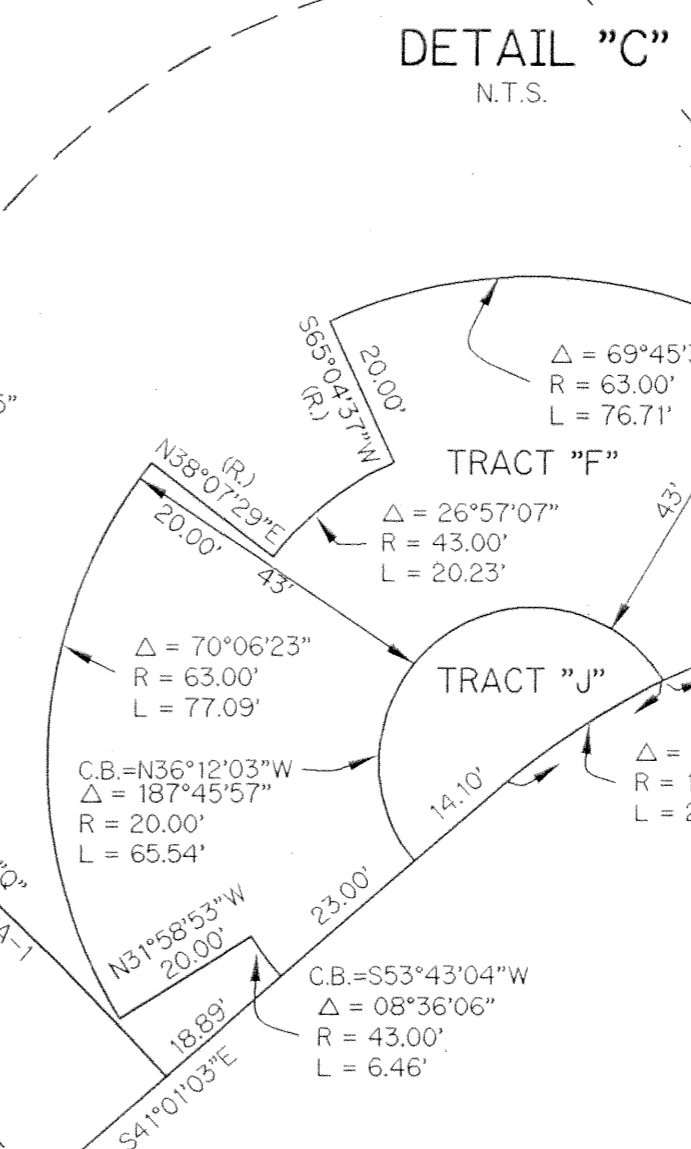
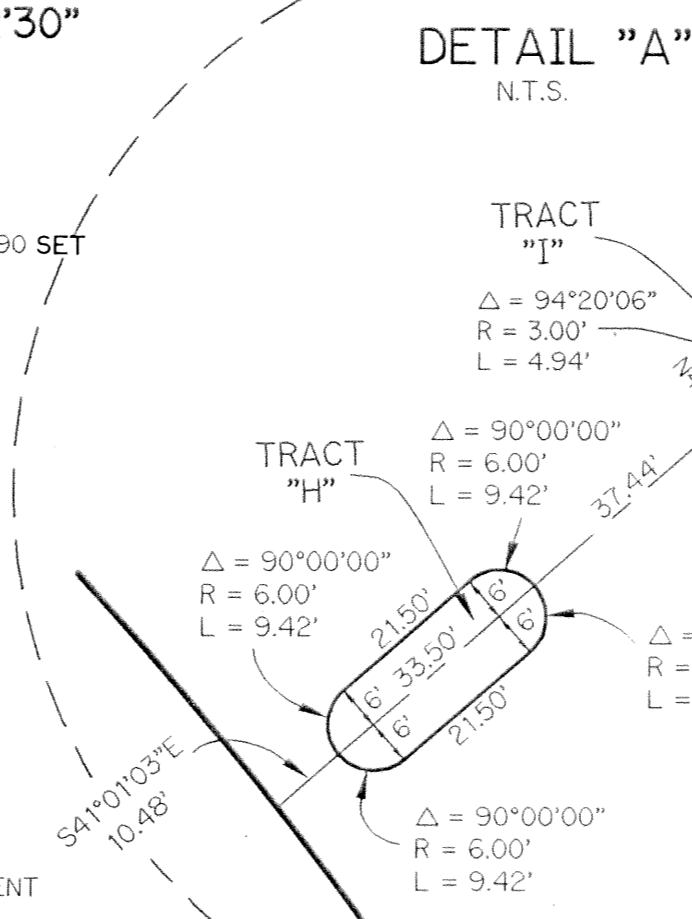
POINT OF COMMENCEMENT  
SOUTHEAST CORNER SECTION 11  
TOWNSHIP 42 SOUTH, RANGE 42 EAST

POINT OF BEGINNING

PHASE 6 ROADWAY AT BALLENISLES  
P.B.

ALSO AN L.E. IN FAVOR OF NORTH PALM BEACH IMPROVEMENT DISTRICT

- LEGEND:**
- - FOUND PERMANENT REFERENCE MONUMENT
  - - PERMANENT REFERENCE MONUMENT, PLS #4190 SET
  - - PERMANENT CONTROL POINT, PLS #4190
  - Δ - DELTA ANGLE
  - L - ARC LENGTH
  - R - RADIUS
  - B.E. - BUFFER EASEMENT
  - L.E. - LANDSCAPE EASEMENT
  - N.R. - NOT RADIAL
  - N.T.S. - NOT TO SCALE
  - OR.B. - OFFICIAL RECORD BOOK
  - P.B. - PLAT BOOK
  - P.S. - PAGES
  - P.L.S. - PROFESSIONAL LAND SURVEYOR
  - P.S.M. - PROFESSIONAL SURVEYOR & MAPPER
  - R/W - RIGHT-OF-WAY
  - S.T. - SURVEY TIE
  - U.E. - UTILITY EASEMENT
  - L.A.E. - LIMITED ACCESS EASEMENT
  - D.E. - DRAINAGE EASEMENT
  - P.E. - PARKING EASEMENT
  - W.L.E. - WATER LINE EASEMENT
  - W.M.M.E. - WATER MANAGEMENT MAINTENANCE EASEMENT
  - C.B. - CHORD BEARING
  - L.E. - LANDSCAPE EASEMENT
  - (R) - RADIAL
  - (P.C.) - POINT OF CURVATURE



THIS INSTRUMENT PREPARED BY  
WILBUR F. DIVINE P.S.M. #4190 STATE OF FLORIDA  
LAWSON, NOBLE AND WEBB, INC.  
ENGINEERS PLANNERS SURVEYORS  
WEST PALM BEACH, FLORIDA